

牌号信息

GRADE INFORMATION

| 分类 Classification | 牌号 Grade | 钴含量 Cobalt Content (Co%) | 硬度 Hardness (HRA) | 密度 Density (g/cm ³) | 抗弯强度 TRS (N/mm ²) |
|--|-------------|-----------------------------|----------------------|------------------------------------|----------------------------------|
| 拉丝模具材质牌号 Grade for Wire drawing die | HM12AX | 6 | 93.3 | 14.80 | 2600 |
| | HM12X | 6 | 92.3 | 14.90 | 2800 |
| | HM14 | 7 | 90.5 | 14.85 | 2800 |
| | HU20 | 10 | 91.8 | 14.40 | 3500 |
| 冲压模具材质牌号 Grade for Stamping die | HU20 | 10 | 91.8 | 14.40 | 3500 |
| | HM24C | 12 | 88.1 | 14.31 | 3200 |
| | HM30AX | 15 | 91.0 | 13.85 | 4000 |
| | HM40C | 20 | 83.5 | 13.50 | 2600 |
| 锻造成型模具材质牌号 Grade for Forging die | HM30 | 15 | 86.5 | 14.00 | 3000 |
| | HM40C | 20 | 83.5 | 13.50 | 2600 |
| | HM44C | 22 | 82.5 | 13.40 | 2400 |
| 无磁模具材质牌号 Grade for Non-magnetic die | YN15 | 15(Ni) | 85.3 | 14.19 | 2700 |
| | YN7 | 7(Ni) | 92.0 | 14.91 | 2300 |

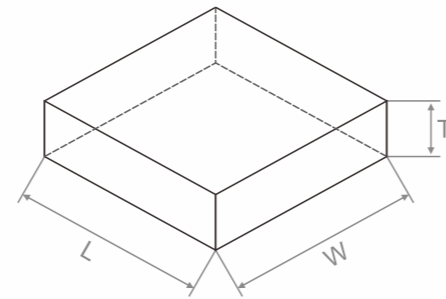
| 晶粒度 Grain Size (μm) | 推荐用途 Application Recommended |
|------------------------|--|
| 亚微细 SUBMICRON | 适用于拉伸直径在3.0mm以下的钢丝、铜丝，且表面光洁度要求很高的有色合金线材或棒材的高速拉丝拉拔。 Applicable to the hard high-speed drawing of steel wire, copper wire with the diameter less than 3mm, and non-ferrous metal pipe or rods with high requirements of surface finish. |
| 细 FINE | 用于拉伸应力不大的条件下，拉伸直径小于6.0mm的钢丝及有色金属线材。 Applicable to the steel wire and non-ferrous metal wire with the diameter less than 6mm under the condition of less tensile stress. |
| 中 MEDIUM | 用于拉伸应力较大情况下，拉伸直径在20mm以下钢、有色金属及其合金线材或棒材；亦适合拉伸直径在10mm以下管材。 Applicable to the steel, non-ferrous metal wire or rods with the diameter less than 20mm, and also pipes with the diameter less than 10mm under the condition of biggish tensile stress. |
| 亚微细 SUBMICRON | 适用于拉伸直径在10.0mm以下的钢丝、铜丝，且表面光洁度要求很高的有色合金线材或棒材的高速拉丝拉拔。 Applicable to the hard high-speed drawing of steel wire, copper wire with the diameter less than 10mm, and non-ferrous metal pipe or rods with high requirements of surface finish. |
| 亚微细 SUBMICRON | 适用于冲裁载荷较小的五金件冲压，耐磨性高，模具寿命长，主要以小冲头为主。 Applicable to metal sheets stamping with small blanking load, with high wear resistance and long mould application life, mainly for making small punches. |
| 粗 COARSE | 用于冲压各种五金件，属于中粗粒度，高韧性材质，通用性强，适用范围广的标准牌号。 Applicable to all kinds of metal sheet stamping, medium coarse grain size, high toughness, highly optimized for general use and wide application range. |
| 超细 ULTRAFINE | 用于冲压不锈钢和铜合金，高耐磨性和高韧性，适用于半导体和各种电子零件冲压。 Applicable for stainless steel and copper alloy stamping. High hardness and fine toughness for semi-conductor and electronics stamping. |
| 粗 COARSE | 适用于标准件、紧固件、五金工具行业对一般钢材、铁制品的冷冲，裁剪。 Applicable to standard parts, fasteners and metal tool industry for cold punching and cutting of general steel and iron. |
| 中 MEDIUM | 高韧性冷锻模 High toughness cold heading die |
| 粗 COARSE | 高韧性冷锻模 High toughness cold heading die |
| 粗 COARSE | 高韧性冷锻模 High toughness cold heading die |
| 中 MEDIUM | 无磁性，用在铁件铆钉冲压和磁材成型型腔。 Non-magnetic properties, for iron rivet stamping and magnetic material forming cavities. |
| 中 MEDIUM | 无磁性，用于铜件铆钉、铁件铆钉冲压及制作冲裁刀。 Non-magnetic properties, for copper rivet, iron rivet stamping and blanking die making. |



板材

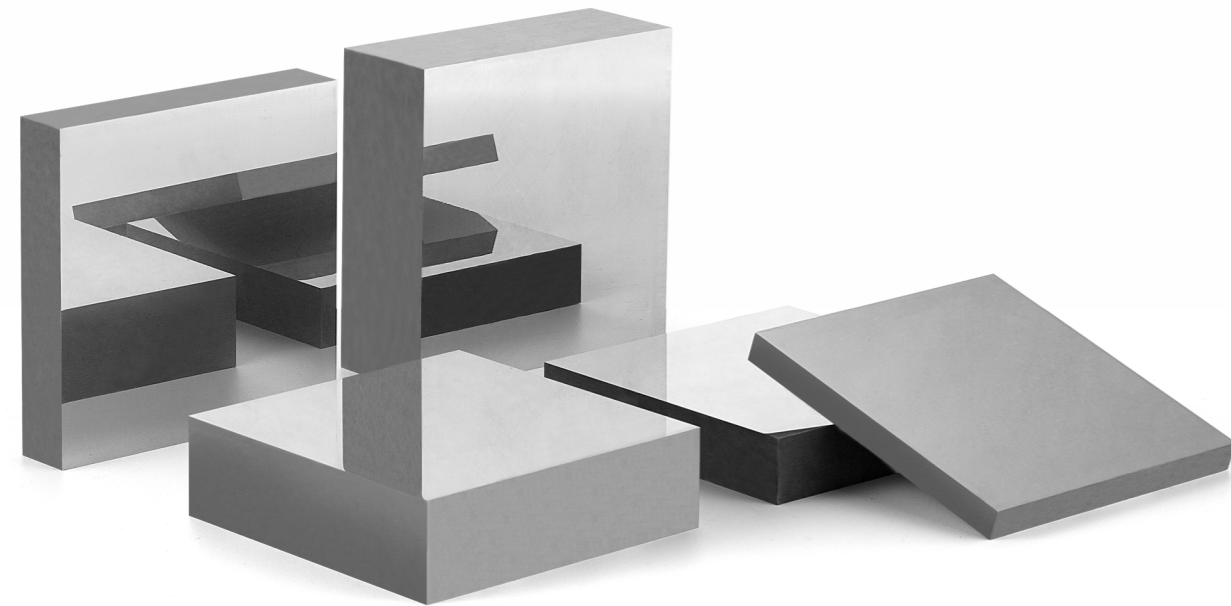
CARBIDE PLATES

| 长 L x 宽 W (mm) | 长宽公差 (mm) Length & Width Tolerance | 厚度 T (mm) | 高度公差 (mm) Height Tolerance |
|----------------|---------------------------------------|-----------|-------------------------------|
| 100x100 | +0/+5 | 3~90 | +0.0/+0.5 |
| 100x150 | +0/+5 | 3~65 | +0.0/+0.5 |
| 150x150 | +0/+5 | 3~60 | +0.0/+1.0 |
| 200x200 | +0/+5 | 3~60 | +0.0/+1.0 |
| 250x250 | +0/+5 | 10~50 | +0.0/+1.0 |
| 300x300 | +0/+5 | 10~50 | +0.0/+1.0 |



注:其他尺寸可定制

Remark:Other dimension customized available



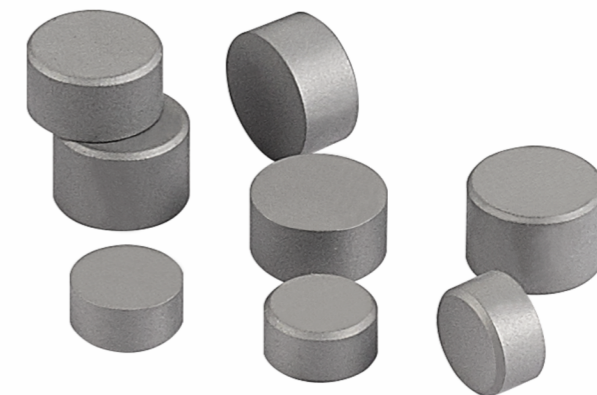
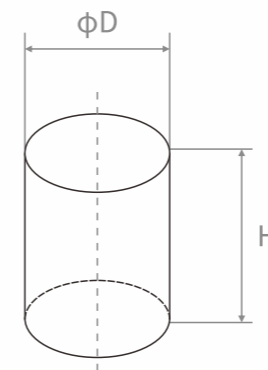
模芯

MOLD CORE

| 直径 ϕD (mm) | 高度 H (mm) |
|------------------|-----------|
| $\phi 10$ | <20 |
| $\phi 12$ | <30 |
| $\phi 15$ | <40 |
| $\phi 16$ | <40 |
| $\phi 20$ | <45 |
| $\phi 25$ | <45 |
| $\phi 30$ | <45 |
| $\phi 40$ | <50 |
| $\phi 45$ | <50 |

注:其他尺寸可定制

Remark:Other dimension customized available



MOLD APPLICATION

模具应用

