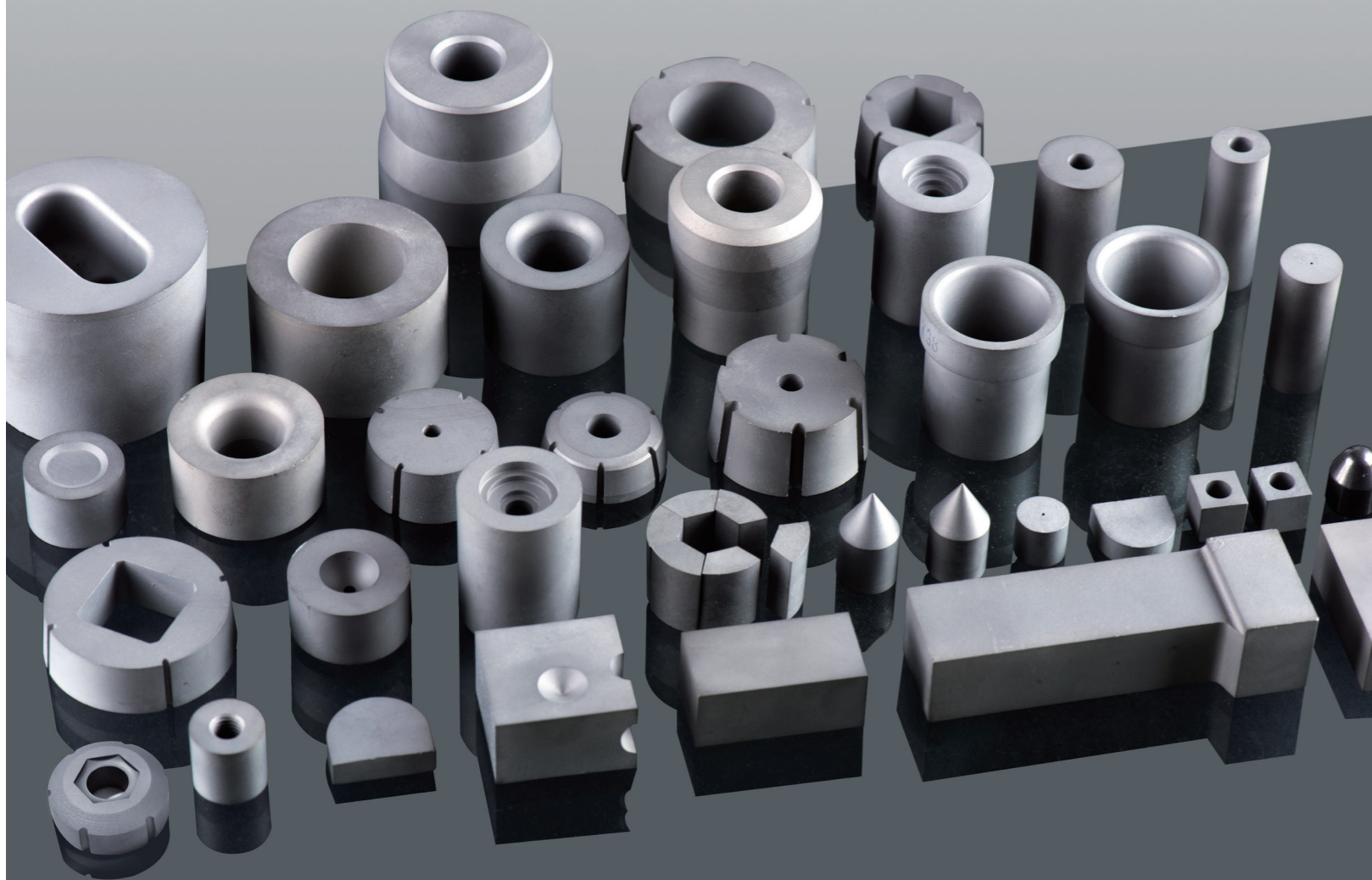


冷墩模仁 Heading die core

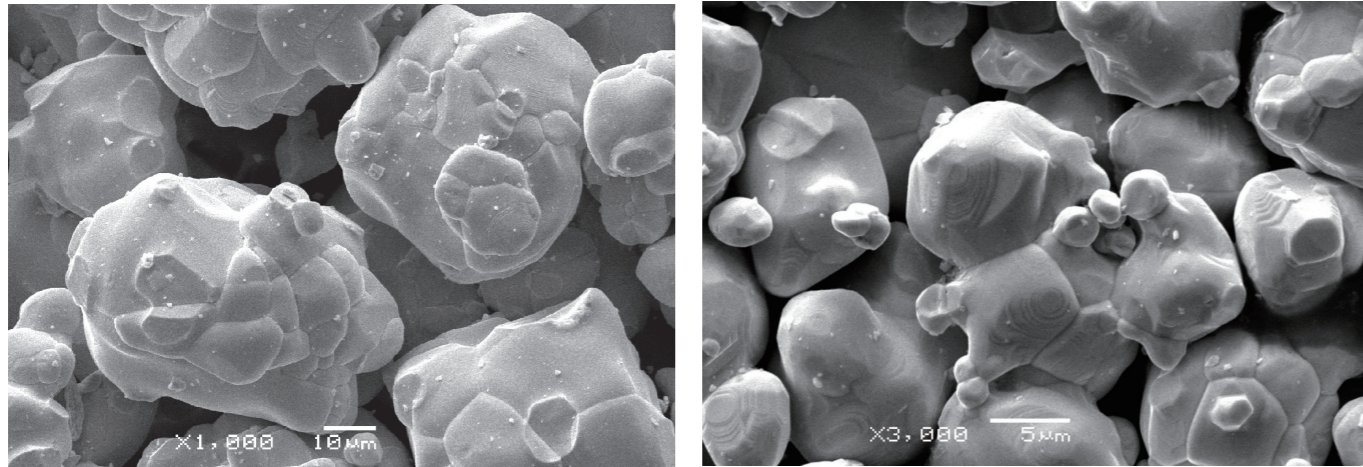


冷墩常规经典型号 Grade Table For High Precision Stamping

牌号 Grade	密度 Density g/cm ³ ±0.05	硬度Hardness HRA±0.2	钴含量 Co%	抗弯强度TRS KN/mm ²	断裂韧性 Impact force J/cm ²	推荐用途 Application
RKG3	14.61	89.3	9.0	3450	0.52	拉伸、束杆模 Drawing die, rod die
RKG4	14.31	89.3	12.0	3450	0.55	
RKG5	14.32	88.3	12.0	3400	0.58	
RKG6	14.12	87.2	14.0	3260	0.65	
RKG7	13.95	89.3	15.0	3680	0.70	
RKG8	13.36	87.2	20.0	3000	0.78	
RST1	13.40	84.5	20.0	2640	0.81	拉伸、束杆模，不锈钢螺丝模 Drawing die, rod die Stainless steel screw die
RST6	13.70	85.8	15.0	2740	0.78	
RST7	13.40	85.0	20.0	2640	0.80	
RST8	13.30	84.0	22.0	2640	0.90	
RST9	13.25	84.6	19.0	2750	0.81	
REA65	13.73	85.0	18.0	3000	0.80	小径 (<Φ20mm) 螺丝模，锁芯模 Small dia (<Φ20mm) screw die, lock core
REA90	13.22	82.8	24.0	2700	0.90	大头型 (≥Φ20mm) 螺丝模 Big head (≥Φ20mm) screw die
RVA70	13.95	84.6	15.0	2600	0.78	螺母模，耐冲击锻造模 Nut dies, Impact resistant forging die
RVA80	13.58	84.0	20.0	2740	0.85	
RVA90	13.39	82.5	22.0	2350	0.90	
RVA95	13.10	81.5	25.0	2150	0.96	
RHA60	13.95	84.5	14.0	2640	0.76	热间锻造模 Hot forging die
RHA70	13.58	83.0	16.0	2350	0.82	
RN20	13.49	85.5	20.0	2760	0.81	
RN22	13.15	83.2	22.0	2360	0.90	拉伸、束杆模，不锈钢螺丝模 Drawing die, rod die Stainless steel screw die
XK3	13.22	85.3	22.0	2750	0.82	
XK4	13.08	86.0	23.0	2800	0.83	
XK6C	13.81	85.4	15.0	2650	0.79	
XK16	13.22	84.8	22.0	2700	0.85	大头型 (≥Φ20mm) 螺丝模 Big head (≥Φ20mm) screw die
XK5	13.05	83.0	24.0	2520	0.95	
XK15	13.82	87.0	15.0	3250	0.77	拉伸、束杆模 Drawing die, rod die
XK20	13.85	88.0	15.0	3450	0.72	
XK70	14.11	86.3	14.0	3100	0.76	
XK10	13.25	83.5	23.0	2350	0.92	螺母模，螺栓模，耐冲击锻造模 Nut dies, bolt die, Impact resistant forging die
XK26	12.95	83.5	26.0	2600	0.95	
XK81	13.41	83.8	20.0	2880	0.87	
XK91	13.23	82.5	22.0	2330	0.92	
XK97	12.85	80.2	27.0	2700	0.97	

新一代GH 系列 高耐磨、高韧性钨钢 New GH series grades super high wear resistant, super high toughness

- 1、采用耐冲击圆形单晶碳化钨
Use impact resistant spherical single crystal WC power
- 2、6MPa 压力烧结、-190℃ 深冷处理
Follow with a -190℃ cryogenic treatment after sintering



传统合金 WC 多晶体组织

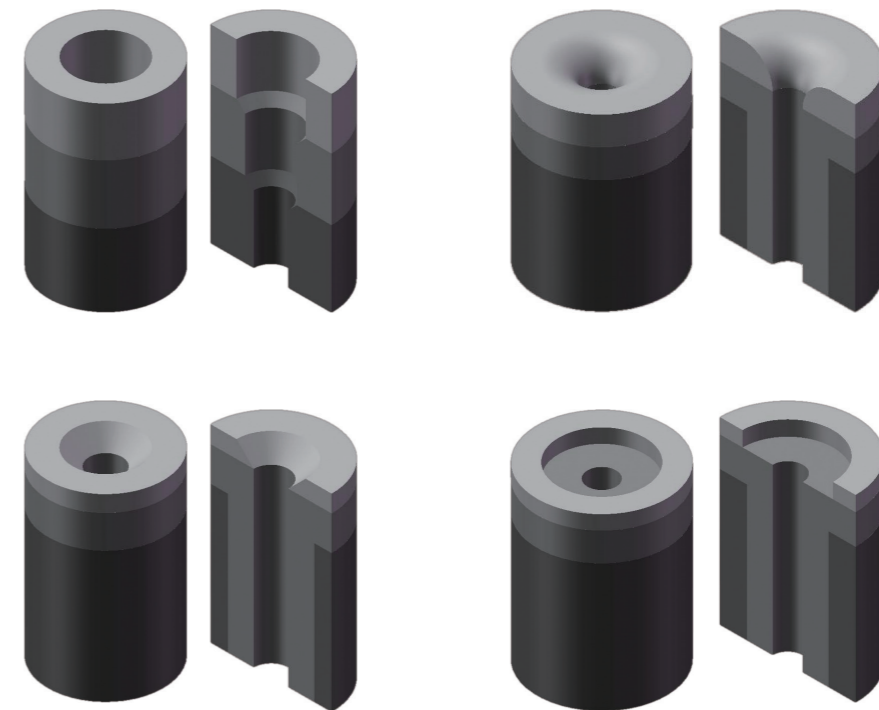
GH 系列合金 WC 单晶圆形组织

牌号表 Grade table

牌号 Grade	密度Density g/cm ³	硬度Hardness HRA	钴含量 Co%	抗弯强度 TRS	断裂韧性 Mpa.M1/2	推荐用途 Appilcation
GH10	12.90	80.5	27.0	2140	0.97	不锈钢螺丝模/耐冲击锻造模 Stainless steel screw die, impact resistant forging die
GH15	13.60	85.0	20.0	2580	0.82	
GH20	13.40	83.8	22.5	2780	0.87	
GH30	13.50	82.1	22.0	2380	0.88	
GH35	13.20	83.8	23.0	2550	0.92	
GH40	13.30	82.2	25.0	2160	0.95	
GH11	14.70	89.5	8.5	3850	0.75	拉伸、束杆模 Heading die draw or extrude
GH12	13.92	88.5	14.5	3700	0.80	
GH14	13.72	87.5	15.0	3550	0.82	
GH22	13.32	84.6	20.5	2740	0.87	不锈钢螺丝模 Stainless steel screw die
GH24	13.85	86.2	15.0	2860	0.84	
GH25	13.46	85.0	20.0	2780	0.86	不锈钢螺丝模/耐冲击锻造模 Stainless steel screw die, impact resistant forging die
GH26	13.13	84.2	22.0	2680	0.90	
GH28	13.05	83.6	23.0	2640	0.92	耐冲击锻造模 Impact resistant forging die
GH32	13.00	82.8	24.0	2550	0.95	
GH92A	13.12	82.6	25.0	2450	0.96	
GH36	12.86	81.3	25.0	2350	0.98	
GH39	12.80	80.2	27.0	2250	0.99	

复合结构工模具钨钢 Composite structure tungsten carbide for cutting tools and dies

- 1、采用高耐磨性、高韧性复合结构材料解决方案
High wear resistant and tough composite structure grades
- 2、长寿命模具材料解决方案
Long lifetime die core grades
- 3、客制化模具材料解决方案
Customised die core grades



牌号表 Grade table

牌号 Grade	钴含量 Co%	晶粒度Grain Size (µm)	比重Density (g/cm ³)	硬度Hardness HRA	破坏韧性KIC (MN*m ^{-3/2})	用途 Application
SH12	9.5-10.5	2-3	14.42	88.3	22	多种材质以梯度结构组合而成的硬质合金，具有超高韧性（比常规牌号寿命提升2~8倍）。
SH14	12.5-13.5	2-3	14.15	87.0	21	
SH24	14.5-15.5	3-6	13.89	86.1	26	
SH25	19.5-20.5	3-6	13.48	85.0	25	The cemented carbide, which is composed of a variety of materials with a gradient structure, has ultra-high toughness and has a life span of 2 to 8 times longer than that of conventional grades.
SH22	20.0-21.0	3-6	13.39	83.9	27	
SH26	19.5-20.5	6-9	13.51	83.3	31	
SH32	21.5-22.5	6-9	13.31	82.0	32	